

**STREET LEVEL RETAIL SPACE
3261 NW MOUNT VINTAGE WAY**

SILVERDALE, WA 98383


BUILDING FOR LEASE

\$24/SF & NNN



**JCM**
SILVERDALE, WA
9351 Bayshore DR NW

CALL FOR AN APPOINTMENT

 +360-620-5300

 jcmpm.com

 jeff@jcmpm.com

STREET LEVEL RETAIL SPACE 3261 NW MOUNT VINTAGE WAY

SILVERDALE, WA 98383

FOR LEASE

SUITE 101: 1865 SF

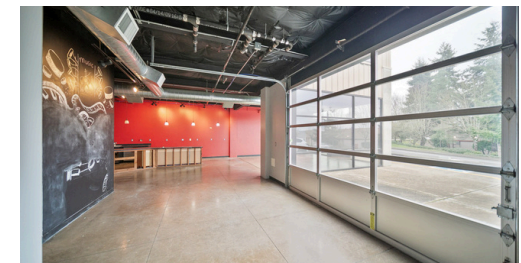
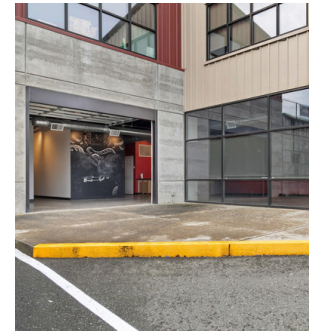
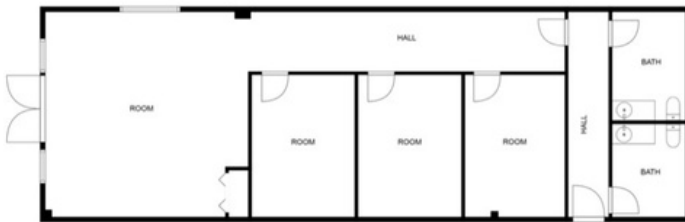
- ✔ High Ceilings
- ✔ Garage door to Outside Patio
- ✔ 2 ADA Restrooms
- ✔ Elevator to Upper Levels



TOTAL: 270 sq. ft.
FLOOR: 1,270 sq. ft.
EXCLUDED AREAS: ROOM: 1413 sq. ft., HALL: 33 sq. ft., KITCHEN: 257 sq. ft.



SUITE 102: 1178 SF




JCM
SILVERDALE, WA
9351 Bayshore DR NW

CALL FOR AN APPOINTMENT

 +360-620-5300

 jcmpm.com

 jeff@jcmpm.com

3261 NW MOUNT VINTAGE WAY

SILVERDALE, WA 98383

FOR LEASE



Relocate your business to Silverdale, WA! Lots of retail & shopping nearby, restaurants and fast food for lunch breaks, YMCA up the road, Target and Starbucks across the street, Kitsap Mall with Dick's Sporting Goods, Kohl's, Barnes & Noble; Costco, Trader Joe's, Winco & Safeway nearby for grocery.

**JCM**
SILVERDALE, WA
9351 Bayshore DR NW

CALL FOR AN APPOINTMENT



+360-620-5300



jcmpm.com



jeff@jcmpm.com

3261 NW MOUNT VINTAGE WAY

SILVERDALE, WA 98383

FOR LEASE




EASY ACCESS:

- ✔ State HWY 3 Entrances: N to Bainbridge Island (Ferry to Downtown Seattle)/Kingston (Ferry to Edmonds) & S to Bremerton (Ferry)
- ✔ Across from Kitsap Mall
- ✔ Nearby to The Trails Retail Complex
- ✔ Nearby to Naval Base Kitsap/Bangor

**JCM**
SILVERDALE, WA
9351 Bayshore DR NW

CALL FOR AN APPOINTMENT

 +360-620-5300

 jcmpm.com

 jeff@jcmpm.com