

CKHS/CKMS

KITSAP MALL

ST MICHAELS  
MEDICAL CENTER

# BUILDING FOR SALE

*with a view!*



## FEATURES:

- ✓ 1,966 SF Building
- ✓ 14,810 SF Land
- ✓ Two Tax Parcels
- ✓ Silverdale w/Dyes Inlet View
- ✓ Near Costco, Hospital, Kitsap Mall

## 3698 NW LOWELL ST

Silverdale, WA 98312

# \$ 999,000



CALL FOR AN APPOINTMENT

+360-620-5300

jcmpm.com

jeff@jcmpm.com



# OFFICE LIVE & WORK

3698 NW Lowell St

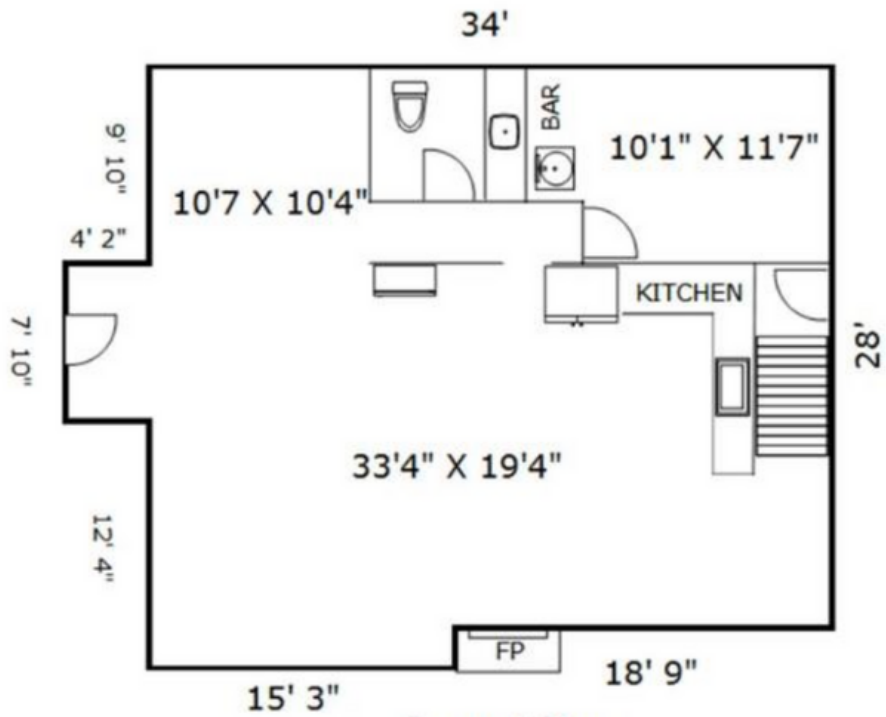
## ABOUT THIS PROPERTY:

One-of-a-kind property for an office or live/work with dynamic views of Dyes Inlet located near the Silverdale business core, Costco and St. Michael Hospital.

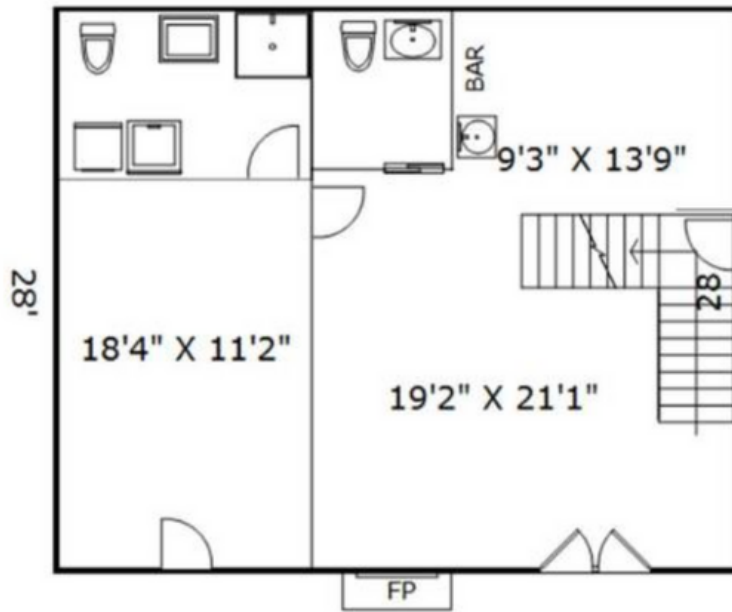
Professionally remodeled, inside & outside, landscaped with sprinklers, outdoor patio with fireplace and large yard for campouts. Great views from the main room and open kitchen with refrigerator, oven & micro-wave, counters with sinks and fireplace.

The lower level includes fireplace, kitchenette, bathroom with shower, washer & dryer & large rooms. Many other great features.





**Second Floor**  
 [1015.14 Sq ft]  
 34'



**First Floor**  
 [952 Sq ft]

**3698 Nw Lowell St, Silverdale, WA 98383**

\*Measurements approximate